

SHOEBURYNESS HIGH SCHOOL

📍 Caulfield Road, Shoeburyness, Essex, SS3 9LL ☎ 01702 292 286

🌐 www.shoeburyness.secat.co.uk ✉ office@shoeburyness.secat.co.uk

Headteacher: Mrs Teri-Leigh Jones

31st October 2022

Dear Parents and Carers,

I hope you have had a good half term break and been able to enjoy some time with your loved ones. Thank you to those of you who have already responded to our short parent survey – this is hugely appreciated and I will feedback on this to you with our response as a school shortly but please be assured that we are and will take action. Please note that this survey will close on Wednesday 2nd November.

It was a real pleasure to be able to spend so much time with our students over the course of my first half term here at Shoeburyness High School. What I have seen is a community of young people with incredible potential; they are well-placed to do great things, both in their examination outcomes, and in their futures. One only has to look at our school newsletter for a snippet into the successes and achievements of our young people to see the excellence in what they do.

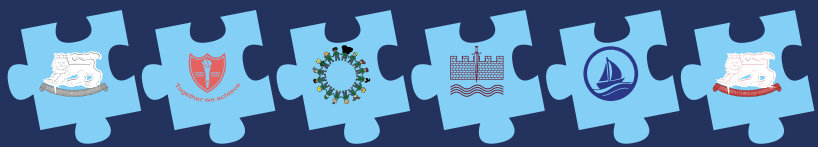
What I would like to speak to you about is some of the key messages I, my SLT and wider staff will be sharing with students over the course of the next few days and weeks. Whilst the very large majority, most students in fact, come to school every day and do their best with positivity and pride, there are still times where conduct and attitude to learning falls below our expectations of excellence. It is vital that all students, staff, parents and carers are clear on what happens when these expectations are not met; likewise, what happens when they are met or exceeded.

Ahead of tomorrow, I would appreciate it if you would reiterate at home:

- the importance of punctuality at school
- the need to dress appropriately in line with the uniform policy
- being prepared for the working day with all necessary equipment
- the importance of a positive attitude to learning
- the crucial part all students play in ensuring a positive learning climate.

Students can and must expect to be challenged and expect consequences where any of these expectations are not met, either in lessons, around the school in general and, as per our behaviour policy, in the wider community. We will offer support, interventions and guidance to those who need it, but each behaviour will have a consequence. Where students make good choices, they will be

BUILDING STRONG SCHOOLS • BUILDING STRONG PARTNERSHIPS • BUILDING STRONG COMMUNITIES



appropriately rewarded and celebrated through the many reward schemes we have on offer here at SHS; poor choices will result in appropriate sanctions issued.

We will share with you the many successes that will no doubt occur for our students in the coming weeks and months, and of course, let you know of any updates to our policy and practice regarding rewards and consequences here at Shoeburyness High School. We want all our young people to feel safe, supported and happy at this school, now and in the future. It is imperative that there is a strong working relationship between home and school in order to give your child an excellent experience with us, and the best possible chances for their futures.

Yours sincerely,

Teri-Leigh Jones
Headteacher