

# Sociology

## A-Level AQA

### The Course

The course focuses on culture, identity, inequality, globalisation and crime. Sociology is a demanding course enabling you to acquire knowledge and understanding of contemporary social processes and changes. You have the opportunity to develop a broad set of transferable key skills, including the ability to analyse and formulate clear, logical arguments with scope for extensive evaluation from a range of theoretical perspectives.

### Assessment

You are assessed by three 2 hour external examinations all taken at the end of the 2 year course.

**Paper 1** Education with Theory and Methods, 33.3 % of total grade. Assesses knowledge of the role and functions of the education system, educational policies and differential educational achievement of social groups, whilst applying sociological research methods to the study of education.

**Paper 2** Topics in Sociology, 33.3% of total grade. Assesses knowledge from work, poverty and welfare as well as the media or global development or beliefs in society.

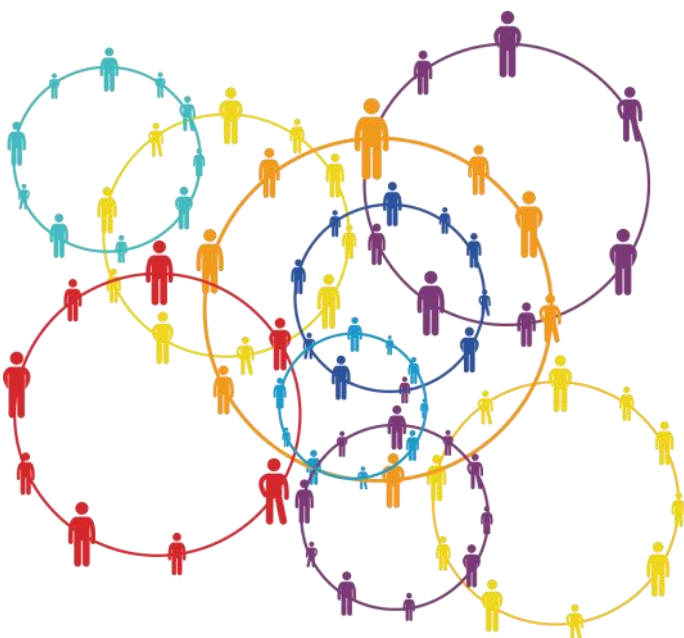
**Paper 3** Crime and Deviance with Theory and Methods, 33.3% of final grade. Assesses knowledge from crime, deviance, social order and social control as well as crime control, surveillance and prevention.

### Entry Requirements

Pathway 1 or 2 entry requirements.

### Careers & Higher Education

Sociology can lead to degree level study in Sociology, Psychology, Criminology etc. Sociology is a wide subject that can lead to a variety of different jobs.



*"Sociology should be thought of as a science of action—of the ultimate common value element in its relations to other elements of action"*

*Talcott Parsons*

